



EXTENSION TABLE SOLUTIONS

Quality Italian Hardware



wilson
&bradley

CONTENTS

4. Alutech Modula (9345)

7. Accessories

9. Alutech Modula (9347)

12. Accessories

13. Peko 4300

EXTENSION TABLE SOLUTIONS

WILSON & BRADLEY

Founded in 1946 in Italy, OMGE products are a result of many years of experience, research and refinement. This research results in a wide range of products that guarantee high quality and ease of use. Since the beginning, great attention to functionality and design has been the main priority for OMGE.

With expert metalwork experience, OMGE are constantly sharing ideas and trends with customers in the search for new forms of expression within the field of table extension slides.



wilson
&bradley



ALUTECH MODULA (9345)



TABLE / BENCH EXTENSION

The Alutech Modula unidirectional extension slide system allows you to have convenient functionalities even within confined spaces.

Pulling out an extension table, an ironing board or a working surface are just some of the versatile applications.

Alutech is an ideal instrument to develop new innovative ideas and concepts.

The pull-out table can be used as a dining table in a small kitchen or as an additional working surface in a bigger kitchen. It is also a practical and convenient solution when used as a desk.

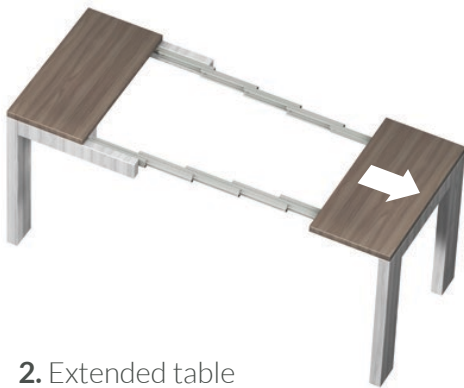
Key Features

- Made in Italy
- Unidirectional opening for insertion into the central position relative to the table leaves
- Multiple extension with steel ball bearing sliding
- Screw mounted to side of table frame and underside of table leaves
- Slide profiles made of aluminium

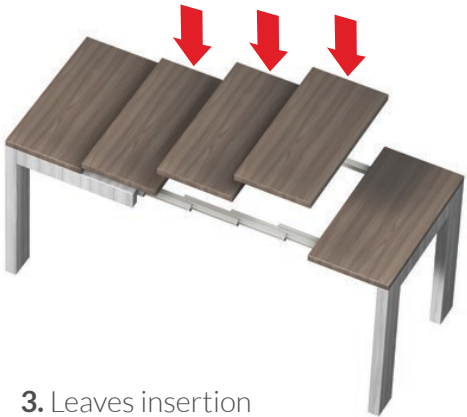
ALUTECH MODULA (9345) TABLE / BENCH EXTENSION



1. Closed table



2. Extended table



3. Leaves insertion



ALUTECH MODULA (9345) TABLE/BENCH EXTENSION

Technical Details

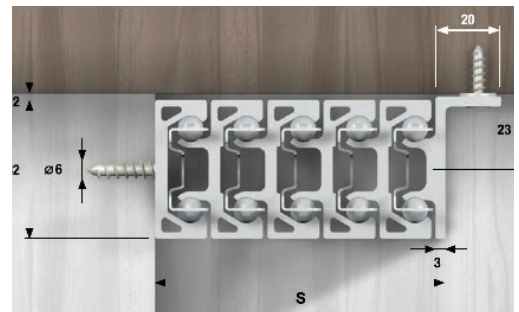
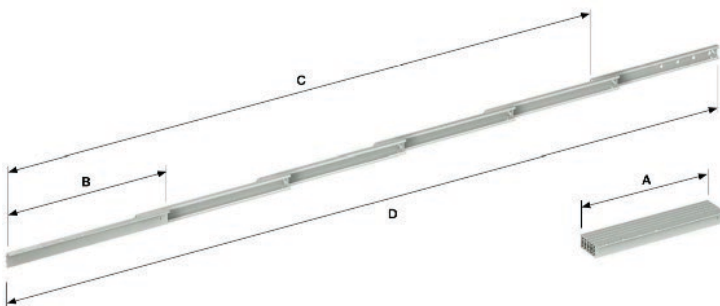
- Extendable Components: 5
- Bracket Length: 350 mm
- Extension: 1275mm
- Overall Extended Length in Full Open Position: 1625mm
- Height: 45mm
- Width/Clearance: 88mm
- Number of Panels: 4
- Panel Size: 315mm

Components

- 2 x 350mm Extension Slides
- Screws, Bolts and Fittings



CODE	FINISH
OMG934535	Aluminium



Measurements

CODE	A	D	C	S	B
OMG934535	350mm	1625mm	1275mm	88mm	350mm

ACCESSORIES

SUITABLE FOR USE WITH ALUTECH MODULA 9345

OMGE ALUTECH MODULA 9345 FRONT FIXING BRACKETS (PAIR)

Used to fix front panel of Alutech 9345.

Components

- 2 x Front Fixing Brackets w/ Screws and Connectors

CODE

OMGLB9602



OMGE ALUTECH MODULA 9345 ALUMINIUM CONCEALED LEG KIT W/ LARGE FRONT BRACKETS

Features a set of folding legs to be used as support with long extension slides, as well as an additional adjustable foot on the bottom of the leg.

Components

- 2 x 750mm Legs
- 2 x Front Fixing Brackets with Screws and Connectors

CODE

OMGLK9603

HEIGHT

750mm



OMGE ALUTECH MODULA TOP PANEL FIXING BRACKETS (PAIR)

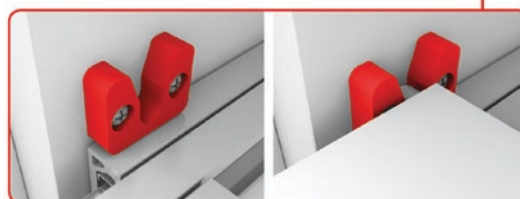
Used to fix top panel of Alutech 9345 and 9347.

Components

- 2 x Top Fixing Brackets w/Screws and Accessories

CODE

OMGFB9604



ACCESSORIES

SUITABLE FOR USE WITH ALUTECH MODULA 9345 & 9347

OMGE INVISIBLE HINGE - 70X16MM

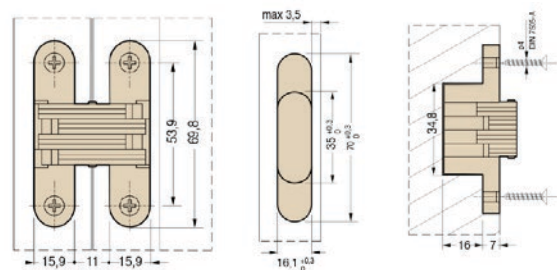
Invisible hinges are concealed from view to allow for clean lines on doors & panels.

- Made of Steel and Zamac
- Suitable for min 22mm Door Thickness
- Total Length: 69.8mm
- Depth: 23mm
- Load Capacity: 25kg
- Opening angle 180°

Components

- 1 x Invisible Hinge

CODE	COLOUR
OMG44015	Nickel Plated



OMGE INVISIBLE HINGE BLACK - 33X10.8MM

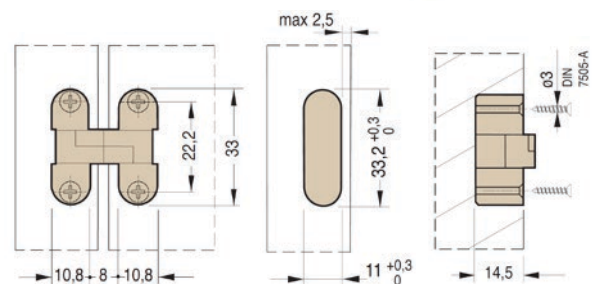
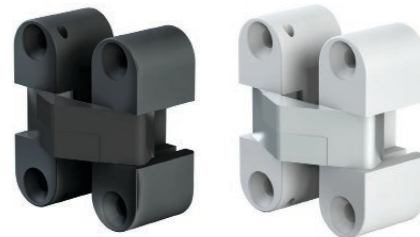
Invisible hinges are concealed from view to allow for clean lines on doors & panels.

- Made of Nylon and Zamac
- Suitable for min 18mm Door Thickness
- Total Length: 33.2mm
- Depth: 14.5mm
- Load Capacity: 6kg per pair
- Opening angle 180°

Components

- 1 x Invisible Hinge

CODE	COLOUR
OMG44001	Black
OMG44002	White





ALUTECH MODULA (9347)

TABLE / BENCH EXTENSION / SELF SUPPORTING

OMGE Alutech Modula 9347 self-supporting Aluminium ball bearing slide.

The Modula is a perfect designer solution for confined spaces. With the ability to be self-supporting, it is one of the best ways to utilising space throughout the home or office.

Key features

- Self Supporting system for weights up to 80kg
- Front Brackets included
- 7 extendable components for an extended length of up to 902mm
- Can be used with an extension table, an ironing board or a working surface.

Visit our website to find out more about the OMGE range:
www.wilbrad.com.au
or call us on: **1800 633 507.**

ALUTECH MODULA 9347 / SELF SUPPORTING

Technical Details

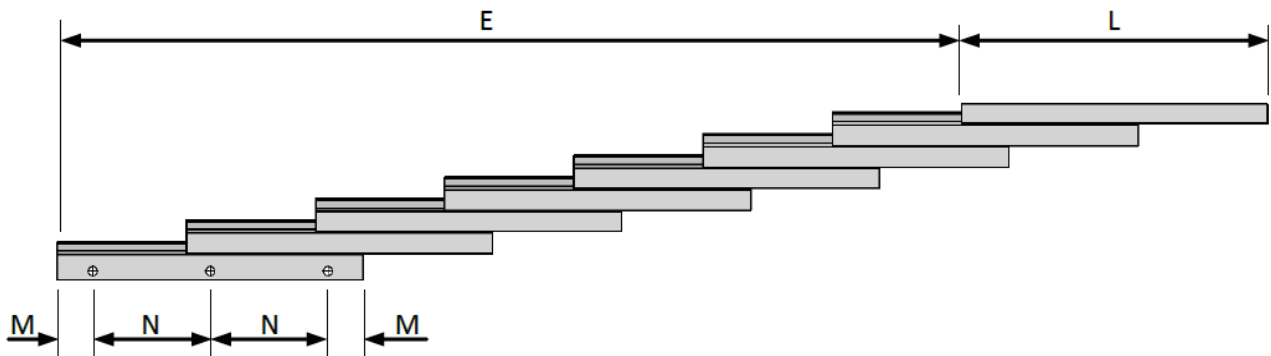
- Bracket Length: 470mm
- Extension: 902mm
- Overall Extended Length: 1372mm
- Height: 43mm
- Width/Clearance: 71mm
- Weight Capacity: 80kg

Components

- 2x 470mm Self Supporting Extension Slides
- 2x Front Brackets
- Screws, Bolts and Fittings

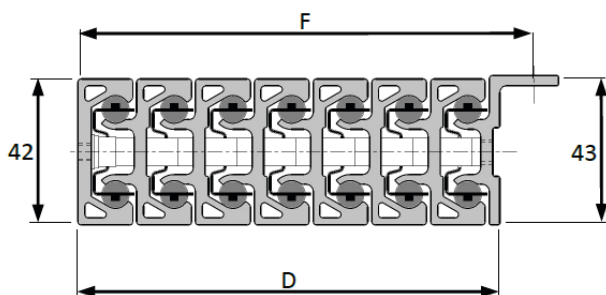


CODE	FINISH
OMG934747	Aluminium



Measurements

CODE	L	E	M	N
OMG934747	470mm	902mm	43mm	192mm



Measurements

CODE	D (mm)	F (mm)
OMG934747	71	81



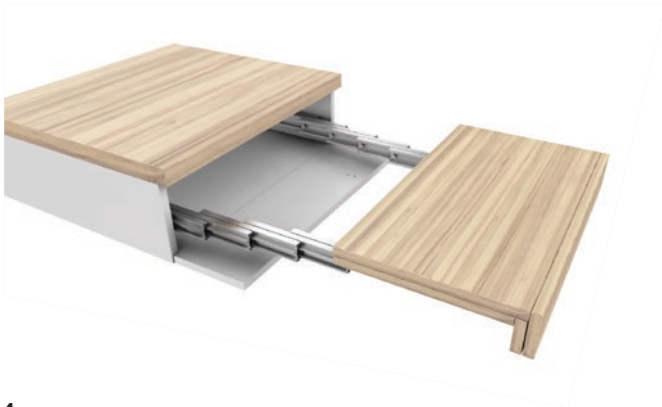
1



2



3



4



5



6

ACCESSORIES

SUITABLE FOR USE WITH ALUTECH 9345 & 9347

OMGE ALUTECH MODULA TOP PANEL FIXING BRACKETS (PAIR)

Used to fix top panel of Alutech 9345 and 9347.

Components

- 2 x Top Fixing Brackets w/Screws and Accessories

CODE

OMGFB9604



OMGE INVISIBLE HINGE - 70X16MM

Invisible hinges are concealed from view to allow for clean lines on doors & panels.

- Made of Steel and Zamac
- Suitable for min 22mm Door Thickness
- Total Length: 69.8mm
- Depth: 23mm
- Load Capacity: 25kg
- Opening angle 180°

Components

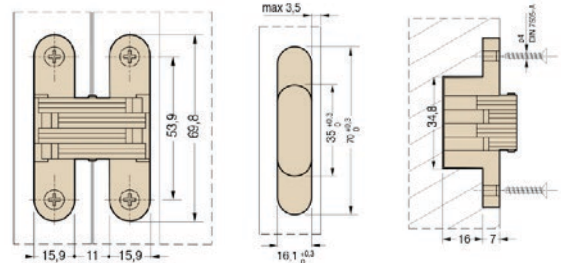
- 1 x Invisible Hinge

CODE

OMG44015

COLOUR

Nickel Plated



OMGE INVISIBLE HINGE BLACK - 33X10.8MM

Invisible hinges are concealed from view to allow for clean lines on doors & panels.

- Made of Nylon and Zamac
- Suitable for min 18mm Door Thickness
- Total Length: 33.2mm
- Depth: 14.5mm
- Load Capacity: 6kg per pair
- Opening angle 180°

Components

- 1 x Invisible Hinge

CODE

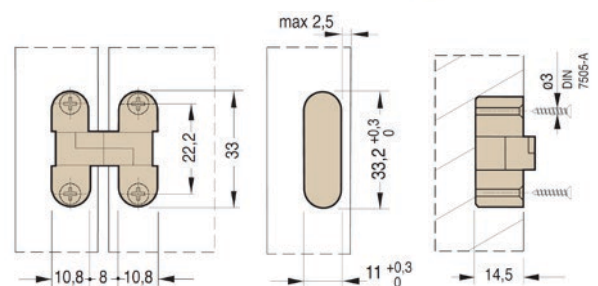
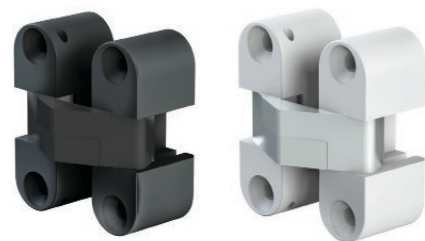
OMG44001

COLOUR

Black

OMG44002

White





PEKO 4300

TABLE / BENCHTOP SLIDES

Peko 4300 is the latest concept by OMGE. It features simple assembling, customisation and a variety of unique uses.

The mechanism consists of a pair of special runners to allow movement in multiple directions, sliding off surfaces or kitchen tops. It is highly durable and equipped with hold-in and hold-out device.

The system features a reduced 3mm gap between the sliding top and the bearing surface, with a maximum carrying capacity of 120kg.

This makes it possible to use special heavy materials such as marble, granite, ceramic, glass or Corian®.

Key features

- Runner made of cold drawn steel that allows the longitudinal, lateral or diagonal sliding of surfaces or kitchen tops.
- Extremely durable mechanism equipped with hold-in and hold-out device.
- Reduced 3 mm gap between the sliding top and the bearing surface.

- Maximum carrying capacity of 120 kg to allow the use of special heavy materials such as marble, granite, ceramic, glass or Corian®.
- Available in two different extension lengths.

Visit our website to find out more about the OMGE range:

www.wilbrad.com.au

or call us on: **1800 633 507**.



PEKO 4300 / TABLE / BENCHTOP SLIDES

Technical Details

- Side Fixing
- 360 Degree Horizontal Adjustment
- 12mm Drilling into the Benchtop
- Minimum Height Space Requirement: 70mm
- Maximum Length: 1800mm
- Weight Capacity: 120kg

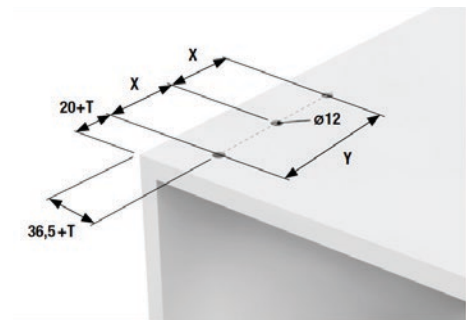
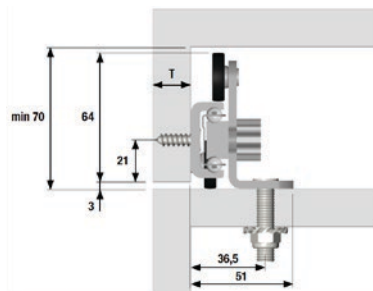
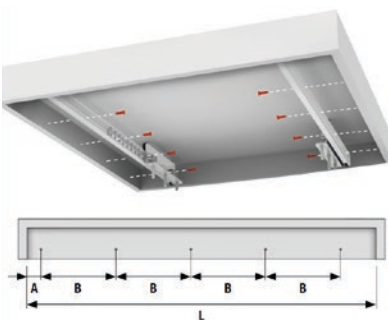


Components

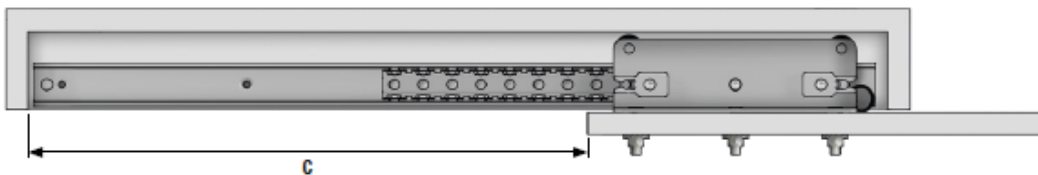
- 2 x Benchtop slides (850 or 1150mm)
- Screws, Bolts and Fittings Included

CODE	BENCH LENGTH	TO SUIT
OMG430090	900mm	850mm
OMG430012	1200mm	1150mm

Side Fixing

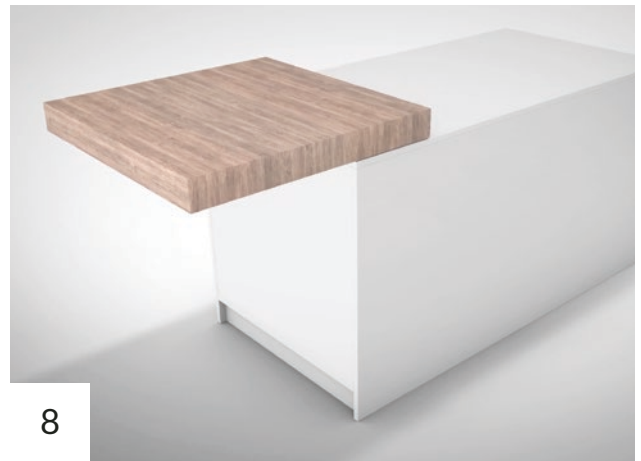
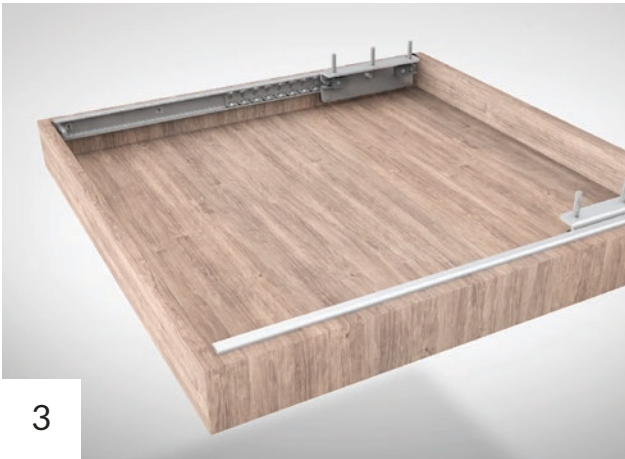


Internal Space Requirement



Measurements

CODES	L min	A	B	C	X	Y
OMG430090	850mm	25mm	160mm	590mm	102mm	-
OMG430012	1150mm	25mm	160mm	790mm	160mm	-





Contact us for more information on any of our products, or visit our website for instructional videos, promotions and manuals.

Online Store

www.wilbrad.com.au

Phone

1800 633 507

VIC

94 Bell Street
Preston VIC 3072

NSW

Unit 4, 3 Basalt Road
Greystanes NSW 2145

WA

19 Christable Way
Landsdale WA 6065

QLD

105 Corymbia Place
Parkinson QLD 4115

SA

79 Frederick St
Welland SA 5007

TAS

Ph: 1800 633 507



Scan the QR code to view our interactive brochures online.



@wilsonandbradley