



# AMBIA-LINE

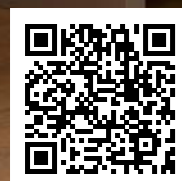
Organisation at its best

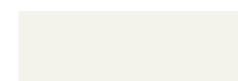
# Beautifully organised interiors – throughout your home

AMBIA-LINE beautifully organises every drawer. The inner dividing system's slim frames can be used in a multitude of ways to organise interiors.

## AMBIA-LINE

- 4 Elegant design
- 6 Easy handling
- 8 Ideas for practical kitchens
- 10 Ideas for your kitchen
- 22 Ideas for your bathroom
- 26 Ideas for your bedroom and living space
- 34 Overview of product range
- Ordering information**
- 36 Drawers
- 40 Pull-outs
- 44 Kitchen accessories
- 46 moving ideas





Silk white matt



Indium grey matt



Orion grey matt



Carbon black matt

**Classic steel design**

The powder-coated steel frames are available in four different colours so interiors merge with drawers to create a harmonious entity.

## Practical in function – versatile in application

AMBIA-LINE gives you the freedom to tailor interiors to your requirements and to every type of storage item. The frames have been designed for immediate use. They fit into every drawer and are suitable for all living areas.



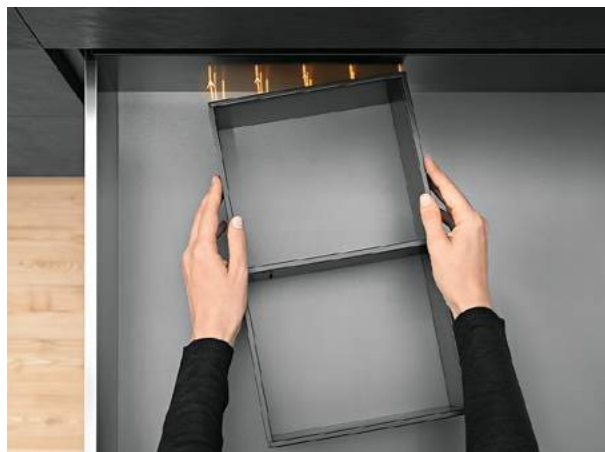
### Elegant design

The minimalist design of AMBIA-LINE goes perfectly with the clean lines of LEGRABOX and MERIVOBX.



### Tailored to contents

The flexible cross dividers can be easily adjusted to the contents.



### Easy handling

The frames can be positioned wherever required. A magnet for attachment to the back and anti-slip feet provide a secure hold.





Discover exciting ideas for a better quality of living throughout your home.  
www.blum-inspirations.com



# Ideas by Blum: Practical solutions for your home



**Kitchens that are fit for everyday use are not only beautiful but also practical.**

They have the following features:

- Efficient workflow (ergonomics)
- Optimum space utilisation (storage space)
- Enhanced convenience (motion)
- Freedom for your ideas (design)

Blum helps to enhance your home with innovative fittings, clever cabinet solutions and useful kitchen planning expertise.



### Ergonomics

Everything is easy to access and clearly organised.



### Storage space

Make full use of the storage space available.



### Quality of motion

It's easy to open and close furniture.

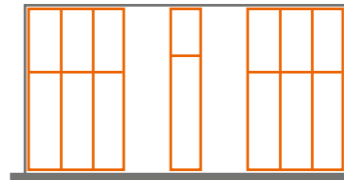


### Design

Turn your creative ideas into reality.



Ideas for your kitchen



Steel design  
Carbon black matt

**AMBIA-LINE for cutlery**

- The cutlery insert with a soft touch coating ensures that cutlery does not clatter in drawers.
- Cutlery inserts and frames can be combined as required.



reddot award 2014  
winner



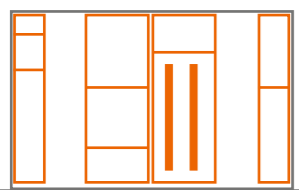
German  
Design Award  
SPECIAL  
MENTION 2015



Detailed information on awards

**AMBIA-LINE for kitchen utensils and AMBIA-LINE film/foil dispenser**

- Everything runs like clockwork because you have clear visibility of whisks, vegetable peelers and ladles.
- The AMBIA-LINE film/foil dispenser ensures effortless dispensing and a perfect tangle-free cut.

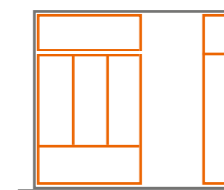


Steel design  
Orion grey matt



**AMBIA-LINE for cutlery**

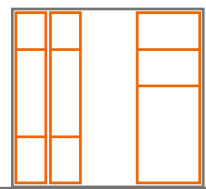
- The cutlery insert beautifully organises cutlery.
- The high quality material can easily be cleaned with a damp cloth.



Steel design  
Carbon black matt

**AMBIA-LINE for odds and ends**

- Odds and ends are kept nice and tidy and are immediately to hand.
- Seldom used items are exactly where they should be and ready for use.

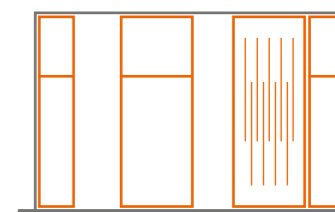


Steel design  
Orion grey matt



**AMBIA-LINE knife holder**

- The knife holder ensures tidy and secure storage of up to nine knives.
- High-quality nylon and anti-fingerprint stainless steel keep the cutting edges protected without dulling the blades.



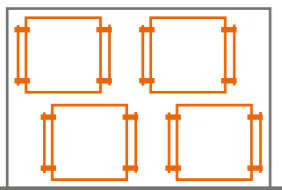
Steel design  
Carbon black matt





**Blum plate holder**

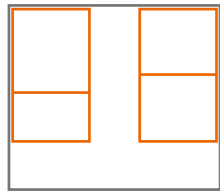
- Up to 12 plates are held securely in pull-outs and can be swiftly carried to the dining table.
- The plate holder can be easily adjusted to different plate sizes.



Steel design  
Orion grey matt

**AMBIA-LINE for provisions**

- The SPACE TOWER larder unit keeps jars and tins of all sizes nice and tidy.
- The non-slip AMBIA-LINE frames also securely hold open packs of flour, sugar or rice.



Steel design  
Carbon black matt



**AMBIA-LINE for cleaning utensils**

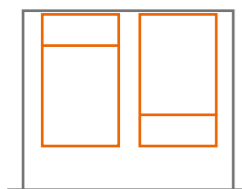
- The sink pull-out makes full use of the storage space under the sink which is often wasted. Utensils can be clearly organised.
- Washing-up liquid, sponges and brushes are kept exactly where they are needed.



Steel design  
Carbon black matt

**AMBIA-LINE for open provisions**

- AMBIA-LINE tidies up pull-outs in a jiffy.



Steel design  
Orion grey matt



**AMBIA-LINE for waste separation**

- Cleaning products are kept secure and separate from waste separation containers.
- The cross divider can be adjusted to suit different bottle sizes.

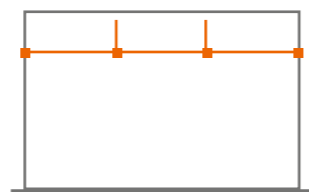


Steel design  
Carbon black matt



**AMBIA-LINE for pots and lids**

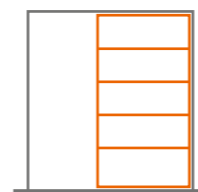
- The best place to store cookware is in the pull-out directly under the hob.
- The cross gallery keeps lids upright and within easy reach.



Steel design  
Indium grey matt

**AMBIA-LINE for bottles and chopping boards**

- Bottles are held securely and are immediately to hand.
- Wider pull-outs provide extra space, e.g. for chopping boards.

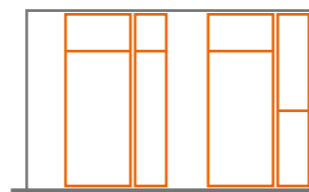


Steel design  
Carbon black matt



**AMBIA-LINE for cooking utensils**

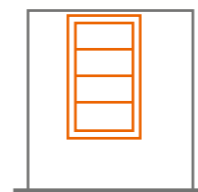
- Wooden spoons, spatulas and whisks are always at your fingertips.
- The cross dividers can be adjusted to the length of the utensils.



Steel design  
Carbon black matt

**AMBIA-LINE spice holder**

- The spice holder securely holds containers of all shapes and sizes.
- They are held at an angle so you can easily read the labels: pepper, cinnamon, coriander, etc.



Steel design  
Silk white matt



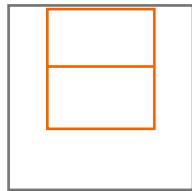
# Ideas for your bathroom





**AMBIA-LINE for personal care products**

- Towels, lotions and perfumes are kept nice and tidy.
- The frames can be easily cleaned with a damp cloth.



Steel design  
Silk white matt

**AMBIA-LINE for bathroom accessories**

- Tidy interiors turn your bathroom into a spa oasis.
- The durable frames are resistant to high humidity.

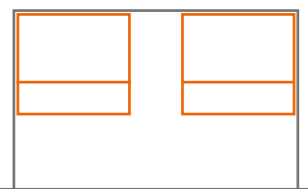


Steel design  
Silk white matt



**AMBIA-LINE for cosmetics**

- All your beauty products are visible at a glance.
- The frame securely holds even the smallest items and ensures they are always to hand.



Steel design  
Silk white matt





Ideas for your bedroom  
and living space

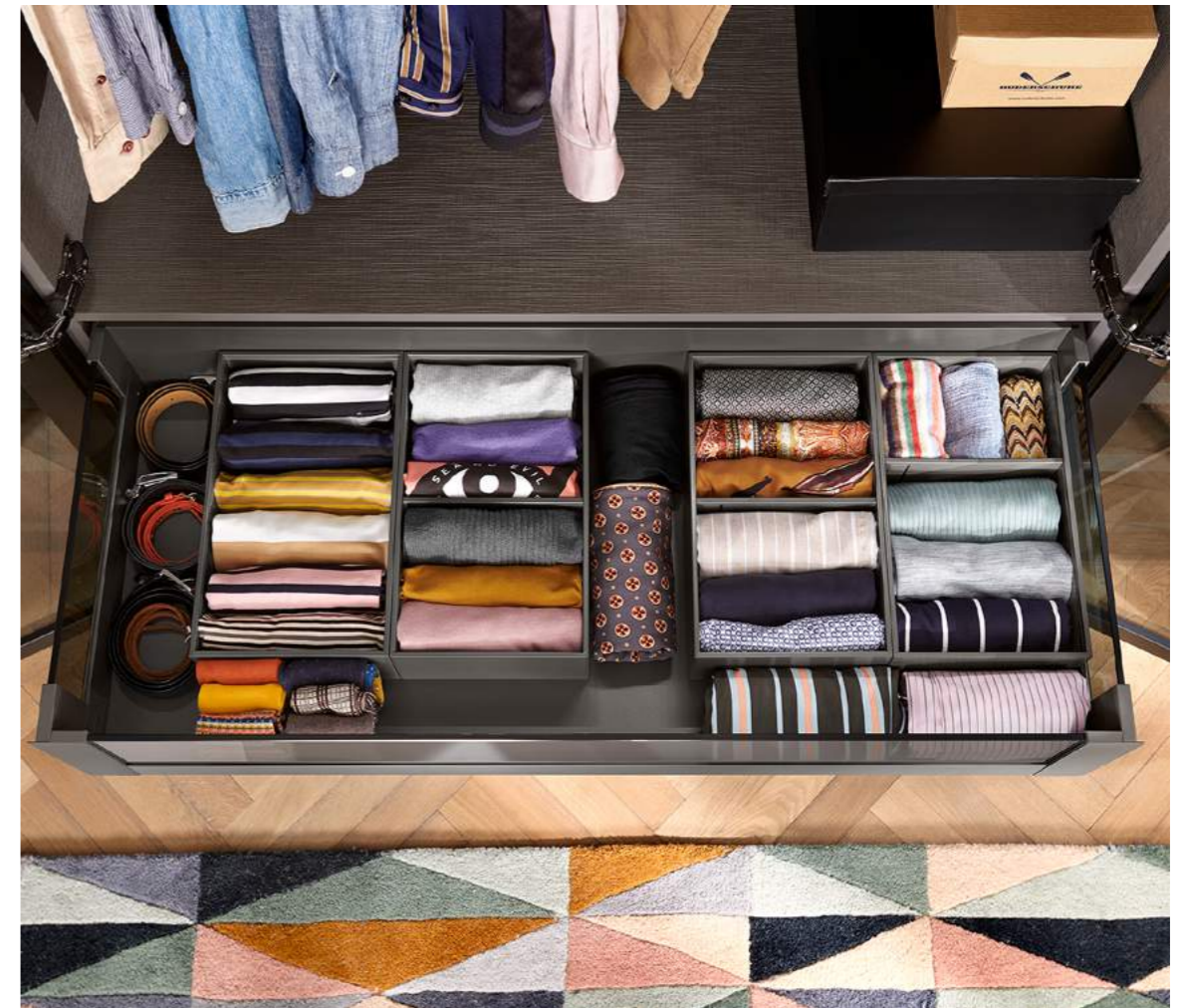


**AMBIA-LINE for accessories**

- Silk scarves, gloves and jewellery are elegantly presented.
- Matching accessories are to hand in seconds.

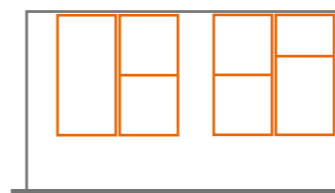


Steel design  
Carbon black matt



**AMBIA-LINE for clothing**

- These frames keep everything nice and tidy – be it T-shirts, belts or socks.
- Combine your perfect outfit in no time thanks to beautifully organised interiors.

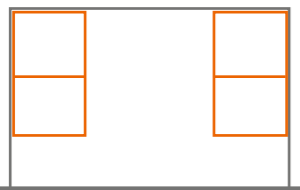


Steel design  
Indium grey matt



**AMBIA-LINE for sports outfits**

– Sports equipment, accessories and clothing are kept neat and tidy.

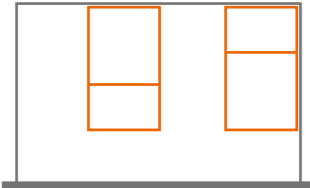


Steel design  
Orion grey matt



**AMBIA-LINE for home décor items**

- The frames beautifully organise vases and candle holders of all shapes and sizes.
- Delicate and fragile items are kept nice and safe.

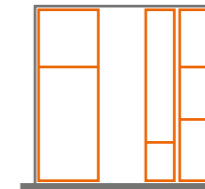


Steel design  
Carbon black matt



**AMBIA-LINE for work essentials**

- Beautifully organised interiors make it easier to focus on work.
- Stress reducing chocolate is immediately to hand.



Steel design  
Carbon black matt



# AMBIA-LINE Overview of product range

## Sizes



Narrow frame  
Width 100 mm  
Lengths 422/472/522/572 mm  
Height 50 mm



Wide frame  
Width 200 mm  
Lengths 422/472/522/572 mm  
Height 50 mm



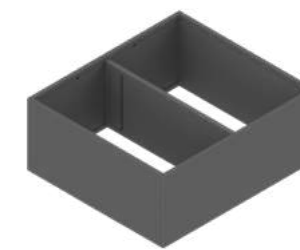
Short frame  
Width 242 mm  
Length 272 mm  
Height 50 mm



Cutlery insert  
Width 300 mm  
Lengths 422/472/522/572 mm  
Height 50 mm



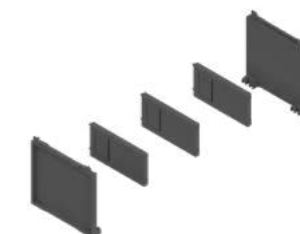
High frame (long)  
Width 218 mm  
Length 370 mm  
Height 110 mm



High frame (short)  
Width 242 mm  
Length 270 mm  
Height 110 mm

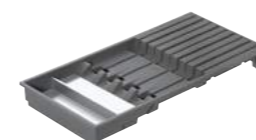


Cross gallery and lateral divider  
For cutting to size to fit the right width



Bottle set  
Width 100 mm or 200 mm  
For tool-free attachment to narrow or wide frames

## Kitchen accessories



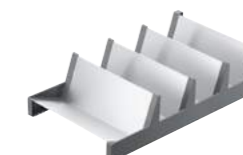
Knife holder  
Width 187 mm  
Length 409 mm  
For wide frames



Blum plate holder  
For plates with Ø 186-322 mm  
Height 170 mm

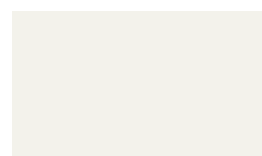


Film/foil dispenser  
Width 187 mm  
Length 409 mm  
For wide frames



Spice holder  
Width 205 mm  
Length 356 mm  
For high frames (long)

## Steel design



Silk white matt



Indium grey matt



Orion grey matt



Carbon black matt

## Colour

SW-M	Silk white matt
IG-M	Indium grey matt
OG-M	Orion grey matt
CS-M	Carbon black matt

## Configure your AMBIA-LINE

Use the online Product Configurator to design your AMBIA-LINE application.



More about the Product Configurator:  
<https://www.blum.com/au/en/services/planning-construction-product-selection/product-configurator/>


Drawers

Steel design



- Powder-coated steel frame in silk white matt, indium grey matt, orion grey matt, carbon black matt
- Containers with a soft touch coating in indium grey matt, orion grey matt, carbon black matt
- Robust, noise-reducing surface
- Optional film/foil dispenser and knife holder
- Can be positioned as desired and provides a secure hold
- Suitable for LEGRABOX and MERIVOBX, height M and K
- Frame height 50 mm


Ordering information

Cutlery insert						
	NL (mm)	Width (mm)	SW-M / OG-M	IG-M	OG-M	CS-M
	450	300	ZC7S450BS3			
	500	300	ZC7S500BS3			
	550	300	ZC7S550BS3			
	600	300	ZC7S600BS3			

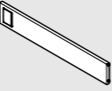
NL Nominal length

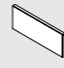
Drawers

Ordering information



Drawer frame – 242 mm						
	NL (mm)	Width (mm)	SW-M	IG-M	OG-M	CS-M
	270–400	242	ZC7S300RSU			


Incl. magnet for attachment to the drawer side or steel back



Cross divider (optional)						
	Height (mm)	Width (mm)	SW-M	IG-M	OG-M	CS-M
	50	242	ZC7Q0U0SS			

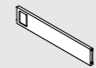
Adapter profile for attachment to chipboard back (optional)						
	Height	Width (mm)	SW-M	IG-M	OG-M	CS-M
	M	242	ZC7A0U0M			
	K	242	ZC7A0U0K			

Recommended from nominal length 350 mm

Drawer frame – 100 mm						
	NL (mm)	Width (mm)	SW-M	IG-M	OG-M	CS-M
	450	100	ZC7S450RS1			
	500	100	ZC7S500RS1			
	550	100	ZC7S550RS1			
	600	100	ZC7S600RS1			

Cross divider (optional)						
	Height (mm)	Width (mm)	SW-M	IG-M	OG-M	CS-M
	50	100	ZC7Q010SS			

Drawer frame – 200 mm						
	NL (mm)	Width (mm)	SW-M	IG-M	OG-M	CS-M
	450	200	ZC7S450RS2			
	500	200	ZC7S500RS2			
	550	200	ZC7S550RS2			
	600	200	ZC7S600RS2			

Cross divider (optional)						
	Height (mm)	Width (mm)	SW-M	IG-M	OG-M	CS-M
	50	200	ZC7Q020SS			

NL Nominal length

**Pull-outs**
**Steel design**


- Powder-coated steel frame in silk white matt, indium grey matt, orion grey matt, carbon black matt
- Elegant, slim design
- Can be positioned as desired and provides a secure hold
- Adjustable cross dividers that can be adapted to the items stored, tool-free adjustment in the hole pattern
- Suitable for LEGRABOX, height C and F
- Suitable for MERIVOBX, height E
- Can be used for nominal lengths of 270-600 mm
- Frame height 110 mm

**Ordering information**

Frame for high fronted pull-outs for nominal lengths from 270 mm						
	NL (mm)	Width (mm)	SW-M	IG-M	OG-M	CS-M
	270-600	242	ZC7F300RSU			

Cross divider (optional)						
	Height (mm)	Width (mm)	SW-M	IG-M	OG-M	CS-M
	110	242	ZC7Q0U0FS			

Adapter profile for attachment to chipboard back (optional)						
	Height	Width (mm)	SW-M	IG-M	OG-M	CS-M
	C   E	242	ZC7A0U0C			
	F	242	ZC7A0U0F *			
* Not available in indium grey matt						
Recommended from nominal length 350 mm						

Frame for high fronted pull-outs for nominal lengths from 400 mm						
	NL (mm)	Width (mm)	SW-M	IG-M	OG-M	CS-M
	400-600	218	ZC7F400RSP			

Cross divider (optional)						
	Height (mm)	Width (mm)	SW-M	IG-M	OG-M	CS-M
	110	218	ZC7Q0P0FS			

Adapter profile for attachment to chipboard back (optional)						
	Height	Width (mm)	SW-M	IG-M	OG-M	CS-M
	C   E	218	ZC7A0P0C			
	F	218	ZC7A0P0F *			
* Not available in indium grey matt						
Recommended from nominal length 350 mm						

NL Nominal length

**Pull-outs**
**Steel design**


- Aluminium cross gallery in silk white matt, indium grey matt, orion grey matt, carbon black matt
- Can be positioned as desired and provides a secure hold
- Suitable for LEGRABOX, height C and F
- Suitable for MERIVOBX, height E

**Ordering information for LEGRABOX**

Cross gallery for cutting to size				
	Length (mm)	SW-M	OG-M	CS-M
	1080	ZR7.1080U		
	Internal cabinet width LW - 90 mm			

Attachments				
		SW-M	OG-M	CS-M
	LEGRABOX pure	ZC7U10E0		
	LEGRABOX free	ZC7U11E0		
Order 2 x for each cross gallery				

Lateral divider				
	Length (mm)	SW-M	OG-M	CS-M
	84	ZC7U10F0		

**Ordering information for MERIVOBX**

Cross gallery for cutting to size				
	Length (mm)	SW-M	IG-M	OG-M
	1059	ZR4.1059U		
	Internal cabinet width LW - 111 mm			



Attachments				
		SW-M	IG-M	OG-M
	BOXCAP	ZC4U10E0		
	BOXCOVER	ZC4U11E0		
Order 2 x for each cross gallery				

Lateral divider				
	Length (mm)	SW-M	IG-M	OG-M
	84	ZC4U10F0		

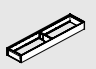
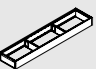
**Pull-outs**
**Steel design**


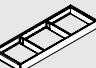

- Bottle set for combination with drawer frame, for nominal lengths of 450 mm or more, steel design
- Can be positioned as desired and provides a secure hold
- Suitable for LEGRABOX, height C and F
- Suitable for MERIVOBX, height E
- Installation height 140 mm (drawer frame with bottle set)

**Ordering information**

Bottle set						
	NL (mm)	Width (mm)	SW-M	IG-M	OG-M	CS-M
	From 450	100	ZC7B0100S			
	From 450	200	ZC7B0200S			

Not suitable for inner pull-outs.

Narrow drawer frame						
	NL (mm)	Width (mm)	SW-M	IG-M	OG-M	CS-M
	450	100	ZC7S450RS1			
	500	100	ZC7S500RS1			
	550	100	ZC7S550RS1			
	600	100	ZC7S600RS1			

Wide drawer frame						
	NL (mm)	Width (mm)	SW-M	IG-M	OG-M	CS-M
	450	200	ZC7S450RS2			
	500	200	ZC7S500RS2			
	550	200	ZC7S550RS2			
	600	200	ZC7S600RS2			

NL Nominal length

**Kitchen accessories**

**Small accessories, big impact**

The beautifully designed AMBIA-LINE kitchen accessories are a perfect combination of form and function. Holders for knives, plates and spices and a film/foil dispenser keep kitchens nice and tidy. Everything runs like clockwork because you have clear visibility of utensils in the pull-out and everything is immediately to hand.


**Kitchen accessories**

Assembly, adjustment and removal

[www.blum.com/ambialine-accessories](http://www.blum.com/ambialine-accessories)

**Film/foil dispenser**

For easy dispensing with a perfect tangle-free cut


**Knife holder**

The knife holder securely holds up to nine knives and ensures that they are always to hand when needed


**Blum plate holder**

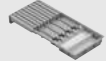
Blum's plate holder can be easily adjusted to different plate sizes. Up to 12 plates can be securely stacked in pull-outs and swiftly carried to the dining-table



**Spice holder**


The holder organises your herbs and spices and securely holds containers and packets of all shapes and sizes

**Kitchen accessories**
**Ordering information**

Film/foil dispenser			
	Length (mm)	Width (mm)	
	409	187	OG-M
	Dual dispenser, cling film and aluminium foil, with film/foil		ZC7C0000
Dual dispenser, cling film and aluminium foil, without film/foil		ZC7C0001	
Suitable for drawer heights K and M			
Nominal length from 450 mm			

Knife holder			
	Length (mm)	Width (mm)	
	409	187	OG-M
For 9 knives			ZC7M0200
Suitable for drawer heights M and K			
Nominal length from 450 mm			

Blum plate holder			
	Plate Ø (mm)	Stacking height	
	186–322	up to 12 plates	OG-M
		ZC7T0350	
Suitable for LEGRABOX high fronted pull-out height C and F, MERIVOBX high fronted pull-out height E			

Spice holder			
	Length (mm)	Width (mm)	
	356	205	OG-M
		ZC7G0P01	
Suitable for LEGRABOX high fronted pull-out height C and F, MERIVOBX high fronted pull-out height E			

# moving ideas

We believe that ideas can move the world. We offer innovative fittings, inspiring furniture concepts and appropriate services so that you can turn your creative ideas into reality. We are driven by your needs, international trends and our shared vision of a better quality of living. Let us work together to create moving ideas.



## Quality of living

We would like you to enjoy greater convenience and functionality when using furniture.



## Product range

Everything from a single source: our wide range of products allows you to keep up with today's and tomorrow's trends.



## Inspiration

We monitor global trends and strive to create the solutions of tomorrow. We like to share our insights with you.



## Innovation

We stay in motion. Curiosity and pioneering spirit drive us to develop new products and services for you.



## Services

We support your daily operations with customised services tailored to your processes.



## Quality

We continuously strive to improve our products, services and ourselves.



## Trust

We take responsibility for partnerships, our employees, society and the environment.

Julius Blum started our journey in 1952 with horseshoe studs. Today we supply innovative fittings to customers in over 120 countries.

 **Houzz** PRO:  
Blum Australia

 **Instagram:**  
@blumaustralia, #blumaustralia

 **Facebook:**  
facebook.com/blumaustralia

 **Android App on Google Play:**  
Easy Assembly App

 **Available on the App Store:**  
Easy Assembly App

 **Tag Us:**  
#blumaustralia

**Blum Showrooms  
Sydney (Head Office)**

10 Blackbird Close  
Len Waters Estate NSW 2170  
Ph: 02 9612 5400

**Adelaide**

179 Railway Terrace  
Mile End SA 5031  
Ph: 08 8118 6070

**Brisbane**

6/39-45 Compton Road  
Underwood QLD 4119  
Ph: 07 3135 9490

**Melbourne**

245 Ferntree Gully Road  
Mount Waverley VIC 3149  
Ph: 03 9982 1720

**Perth**

3/425 Scarborough Beach Road  
Osborne Park WA 6017  
Ph: 08 6467 0110

**Blum Australia Pty Ltd**  
PO BOX 1615  
Green Valley, NSW, 2168  
Australia  
Toll Free: 1800 179 186  
E-mail: info.au@blum.com  
blum.com

